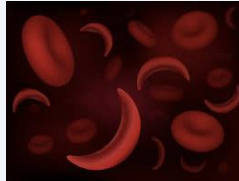


**New England Pediatric Sickle Cell Consortium
presents the**

***12th Annual (2nd Virtual) Sickle Cell Disease Symposium for Providers,
Patients and Families Living with Sickle Cell Disease***



Thursday, October 7, 2021 | 8:45am-2:00pm

PROGRAM DESCRIPTION

The goal of this program is to help providers of and patients with sickle cell disease (SCD) learn some aspects of new best care/practice in the SCD arena. These will include the role of Telehealth in the care of patients with Sickle Cell Disease in the COVID/Post COVID era, Racial Disparities and Social Determinants of Health in SCD, New Drugs and Therapies in SCD along with a patient panel discussing these, and details of a Planned National SCD Network. The agenda (2/3 of a day program, secondary to the seminar being 'virtual' as a consequence of the coronavirus pandemic) will afford attendees the opportunity to learn details as to how Telehealth has significantly changed the care of patients with sickle cell disease over the last two or more years, how racial and social disparities impact the care that families affected by sickle cell disease receive, new treatment approaches for patients with sickle cell disease with a patient panel to discuss these, and a presentation sharing details of a planned National Network for SCD.

TARGET AUDIENCE

Healthcare providers involved in the care and management of patients with sickle cell anemia and related disorders and patients and families affected by SCD.

LEARNING OBJECTIVES

At the completion of this activity, participants should be able to:

- Discuss how changes in the provision of health care during the pandemic have led to the growth of (remote) Telehealth care – the advantages but also the pitfalls of this type of patient care.
- Discuss how racial inequities and aspects of social care or lack of it impact the provision of health care for individuals with sickle cell disease.
- Discuss the newer approaches to managing SCD and its complications, how they work, what are their benefits and what are the recognized side effects and learn from patients/families their experiences with these.
- Discuss the plans for a National SCD network that will serve to make better the care and understanding of SCD, and how improvements can be made in managing and supporting this vulnerable population.

Jointly Provided by



Rhode Island Hospital
Lifespan. Delivering health with care®



12th Annual Sickle Cell Disease Virtual Symposium Agenda

8:45-9:00am	Welcome and Introductions Philippa Sprinz, MD, MSc.
9:00-9:40	Telemedicine Moderator: Katie Cherenzia, MSW, RN, ACCNS-AG Speaker: Sophie Lanzkron, MD, MHS
9:40-9:50	Question & Answer Session
9:50-10:00	Break
10:00-10:40	Racial Disparities/Social Determinants of Health Moderator: Angela Stupinski, LICSW, RN Speakers: Arvin Garg, MD, MPH & Siddika Mulchan, Psy.D.
10:40-10:50	Question & Answer Session
10:50 -11:00	Break
11:00-11:40	Planned Network for SCD Moderator: Anjulika Chawla, MD, FAAP Speaker: Julie Kanter, MD
11:40-11:50	Question & Answer Session
11:50-Noon	Break
Noon-12:40pm	New Drugs and Therapies Moderator: Natasha Archer, MD, MPH Speaker: Matthew Heeney, MD & Erica Esrick, MD
12:40-12:50	Question & Answer Session
12:50-1:00	Break
1:00-1:40	Patient Panel on Experiences with New Drugs and Therapies Moderator: Cheryl Faucher, BSW
1:40-1:50	Question & Answer Session
1:50-2:00	Wrap Up Philippa Sprinz, MD, MSc.

Moderators

Natasha Archer, MD | Boston Children's Hospital, Boston, MA

Anjulika Chawla, MD, FAAP | Hasbro Children's Hospital, Providence, RI

Angela Stupinski, LCSW, RN | Hasbro Children's Hospital, Providence, RI

Katie Cherenzia, MSW, RN, ACCNS-AG | Lifespan Cancer Institute Providence, RI

Cheryl Faucher, BSW | Rhode Island Hospital, Providence, RI

Planning Committee

Philippa Sprinz, MD, MSc.

Pediatric Hematologist-Oncologist | Hasbro Children's Hospital | Providence, RI

Anjulika Chawla, MD, FAAP

Pediatric Hematologist-Oncologist | Hasbro Children's Hospital | Providence, RI

Kelli Landry, Program Manager

Continuing Medical Education, Rhode Island Hospital, Providence, RI

Faculty

Erica Esrick, MD

Instructor in Pediatrics | Harvard Medical School

Attending Physician | Dana-Farber Cancer Institute & Boston Children's Hospital and Blood Disorders Center | Boston Children's Hospital, Boston, MA

Matthew Heeney, MD

Assistant Professor of Pediatrics | Harvard Medical School

Associate Chief, Hematology | Director, Sickle Cell Program | Dana-Farber Cancer Institute & Boston Children's Hospital | Boston Children's Hospital, Boston, MA

Sophie Lanzkron, MD, MHS

Professor of Medicine and Oncology

John Hopkins School of Medicine | Baltimore, MD

Arvin Garg, MD, MPH

Professor of Pediatrics and Vice Chair of Health Equity, University of Massachusetts Medical School and UMass Memorial Children's Medical Center | Worcester, MA

Siddika Mulchan, Psy.D.

Assistant Professor, Department of Pediatrics

University of Connecticut School of Medicine

Hematology/Oncology Psychologists | Center for Cancer and Blood Disorders

Hartford, CT

Julie Kanter, MD

Associate Professor of Medicine; Co-Director of the Comprehensive Sickle Cell Center
University of Alabama, Birmingham, AL

Registration Fees

There are no fees to attend this conference

Register online at:

<http://events.constantcontact.com/register/event?llr=a0eyfkvb&oeidk=a07eiiiiku9d3682bb29>

Accreditation

This activity has been planned and implemented in accordance with the Accreditation Criteria and Policies of the Accreditation Council for Continuing Medical Education (ACCME) through the joint providership of Rhode Island Hospital and the New England Pediatric Sickle Cell Consortium. Rhode Island Hospital is accredited by the ACCME to provide continuing medical education for physicians.

Credit Designations

Physicians: Rhode Island Hospital designates this live activity for a maximum of 4.0 *AMA PRA Category 1 credit(s)*[™]. Physicians should claim only the credit commensurate with the extent of their participation in this activity.

Physician Assistants/Nurse Practitioners: Participants will receive a certificate of attendance stating this program is designated for *4.0 AMA PRA Category 1 credit(s)*[™]. This credit is accepted by the AAPA and AANP.

Nurses: This program has been submitted to RISNA.

Social Workers: This program has been submitted to the NASW, Rhode Island Chapter.

Other healthcare Professionals: Participants will receive a certificate of attendance.



“Successful completion of this CE activity, which includes participation in the evaluation component, enables the learner to earn up to 4.0 MOC points in the American Board of Pediatrics’ (ABP) Maintenance of Certification (MOC) program. It is the CME activity provider’s responsibility to submit learner completion information to ACCME for the purpose of granting ABP MOC Credit”

For More Information

Contact the Rhode Island Hospital CME Office

Phone: 401-444-5853 | Email: Kelli.Landry@Lifespan.org

Or: Philippa.Sprinz@lifespan.org | 401-444-5171